

Directions to the Build Site at Auchenfoyle



The Auchenfoyle site is on a working farm site located to the south of Greenock and west of Kilmacolm

It is off the B788, accessed by a side road, very close to and over the road from Auchenfoyle Farm.

- The What 3 Words location is [///remind.unroll.lunge](https://www.what3words.com/reminder/unroll/lunge) (download the What3Words app)
- The meeting place coordinates are: 55.90349° N, 4.711162° W. (On iOS use: 55.90349, -4.711162)

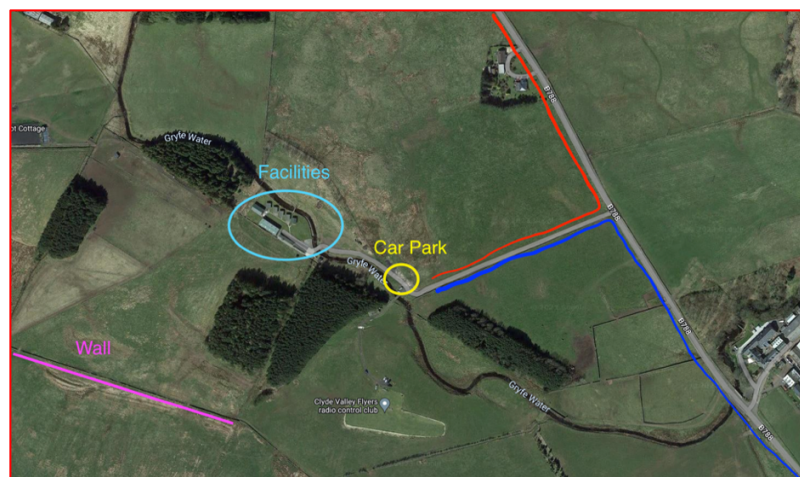
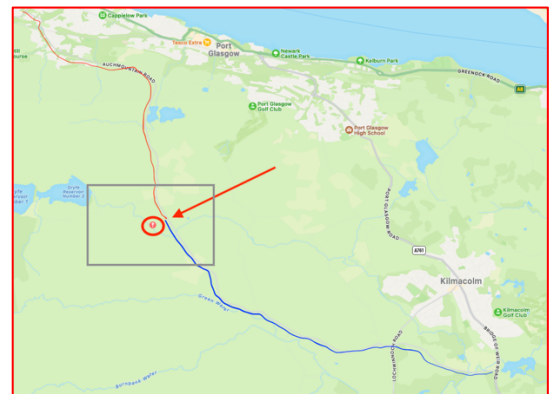
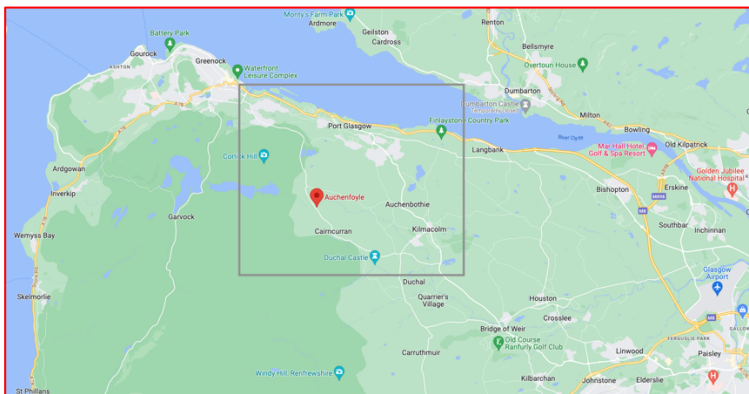
Roads

Take the B788 – **South** from Port Glasgow

- red line in the map on the right,
- approximately **4 miles** from Greenock, after the power substation as you come off the Greenock hill.

Take the B788 – **West** from Kilmacolm

- turn off the A761 onto the B788 - just south of Kilmacolm.
- blue line on the map to the right
- approximately **5 miles** from the A761 at Kilmacolm, after Auchenfoyle Farm on the right and then after the Drystone Pens on the left (see photo below).



The side road off the B788 is bordered by a short wooden fence on each side of the side road –**with a farm gate**. Be very careful, as it's a very fast road – please indicate well before you turn. Last one out – close the gate.

